

**Attachment - Housing and Investment Portfolio**

**Property owned by Council and identified as potentially suitable for inclusion in a Housing and Investment Portfolio**

**Cobar Industrial Estate**

Lot 1 DP 780264 – Vacant Operational Land – Identified potential Sewer Pump station site  
Development/sale potential as a standalone property maybe suitable for neighboring development.



**Lot 2 Sec 3 DP 722 – Vacant Community Land**

Development/sale potential as a standalone property maybe suitable for neighboring development.



Lot 170 DP 1064650 – Operational Land

High potential industrial development/sale – access to railway and Kidman Way



## Cobar Residential

Pipeline Road Corridor – excised from Crown Land as public road providing access for residential development.



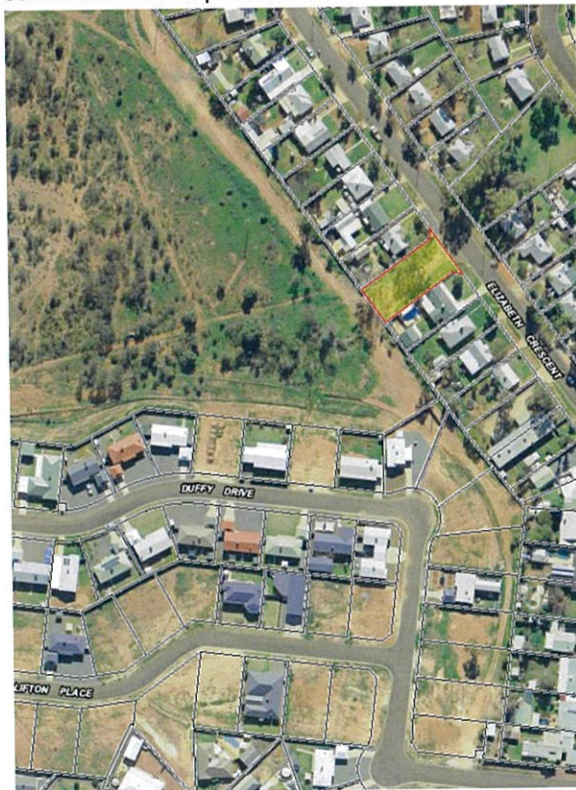
Lot 395 DP 43254 – Vacant Operational Land  
High Potential for residential development/sale – evidence of surface asbestos contamination that will need to be resolved.



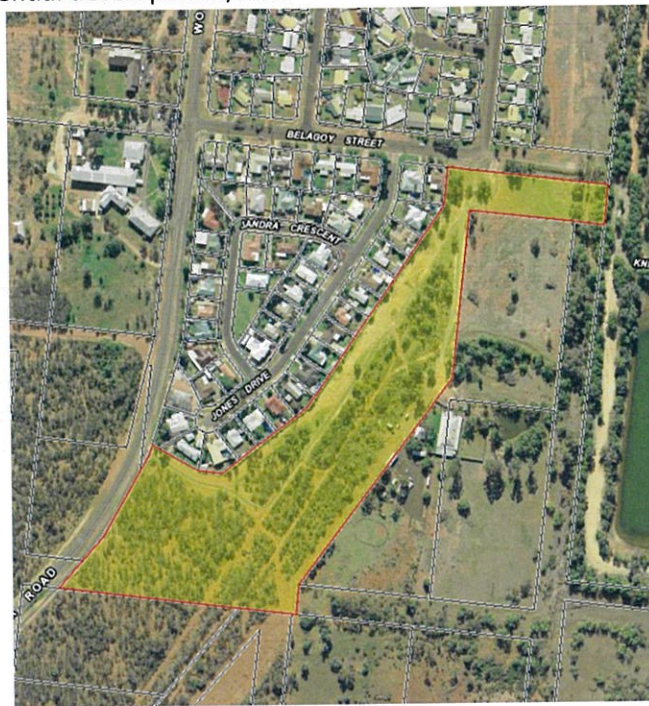
Lot 68 DP 1115073 - Vacant Operational Land  
High potential for residential development/sale



Lot 13 DP 228086 – Vacant Operational Land  
Potential Road access for residential development referred to in the above.



Lot 43 DP792294 – Community Land- Public Reserve  
Low potential for residential development/sale.



Lot 40 DP 1115073 (21 Duffy Drive) – Vacant Operational Land  
High potential for development/sale



Lot 3 DP222228 – Community Land – Urban Bushland  
Low potential for development/sale - historically identified for retention as urban bushland



**Cobar Commercial**

Lot 91 DP1145357 Grand Hotel  
High potential for development/sale



Lot 92 DP 1145359 Carpark and rear access. Community Land  
Low potential for development – retain as access and cark?



Lot 52 DP 556701 Community Land  
Low potential for development/sale. Provides carpark and rear access



Lot 1 DP 980376 Vacant Community Land  
High potential for development/sale

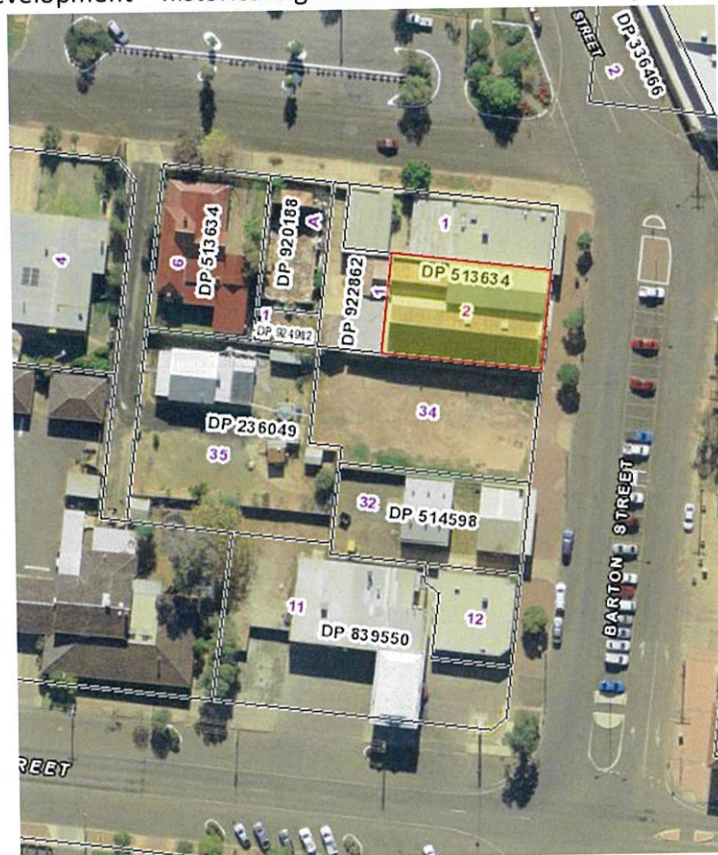




Lot 1 DP 129532 Vacant - No owner  
Council may be able to acquire land through adverse possession



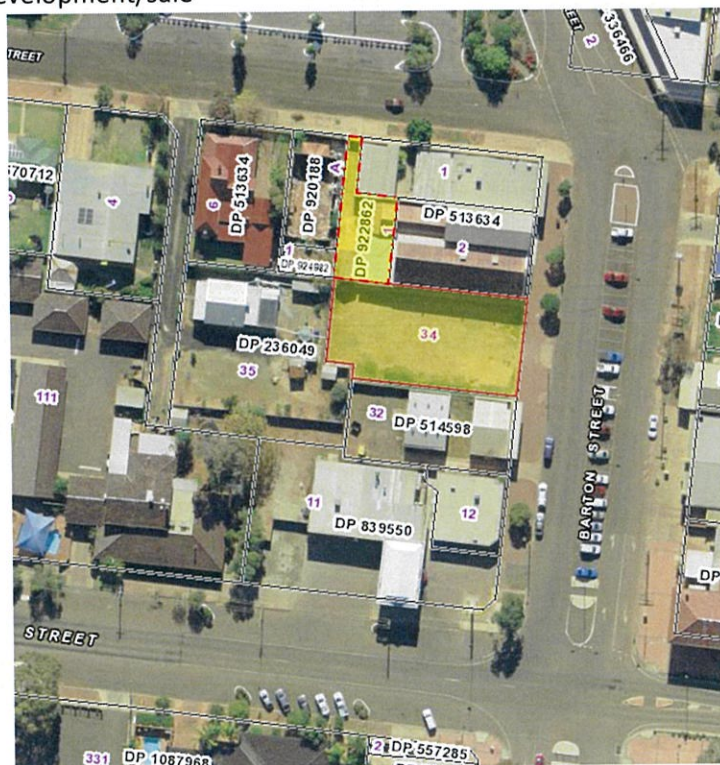
Lot 2 DP513643 Cobar Town Hall Old Cinema - Operational Land  
High potential for development – historical significance for the community



Lot 1 DP 922862 Cobar Town Hall Old Cinema rear access – Operational Land  
High potential for development – part of town hall historical significance for the community



Lot 34 DP236049 – Carpark – Operational Land  
High Potential for development/sale



Lot 1 DP 94005 - Kubby  
High Potential for development/sale



Lot 1 DP 133446 - Kubby  
High Potential for development/sale



Lot 2 DP 513804 - Kubby  
High Potential for development/sale



Lot 5 Sec 5 DP 459 – Former Hostel  
High potential for development/sale



Lot 4 Sec 5 DP 459 – Former Hostel  
High potential for development/sale



Lot 31 DP 807694 Former Hostel  
High potential for development/sale



Lot 1 DP 913246 – Operational Land  
Dentist and house



Lot 1 DP 105639 – Operational Land  
Dentist and house



53 Linsley Street- Operational Land  
6 x Lots Medical Centre



**Housing**

- Lot 7 DP 262665 – Belagoy Street - Dwelling
- Lot 33 DP807694 – Blakey Street – Dwelling
- Lot 373 DP755649 – Brough Street – Dwelling
- Lot 32 DP860711 – James Pl – Dwelling
- Lot 2 DP521050 – Maidens Ave - Dwelling
- Lot 19 DP860711 – Nullamutt Street / James Street – Duplex Dwelling
- Lot 46 DP860711 – Nullamutt Street / Wood Street -Duplex Dwelling
- Lot 11 DP629270 – Prince Street – Dwelling
- Lot 11 DP260360 – Rosewood Street – Dwelling
- Lot 81 DP261594 – Tindera Street – Dwelling
- Lot 69 DP860711 - Wood Street - Dwelling
- Lot 87 DP869164 – Belah Street - Dwelling
- Lot 2 DP622678 - Harcourt Street – Doctors House
- Lot 313 DP755649 - Aerodrome Cottage – Dwelling
- Lot 29 DP792294 - Jandra Crescent - Dwelling

End

6 March 2024

**Subject: Save the Date - Local Roads Congress June 2024**

Dear Mayor and Councillors,

The Roads and Transport Directorate of the Institute of Public Works Engineering Australasia – NSW and ACT Division (IPWEA NSW & ACT), in collaboration with Local Government NSW (LGNSW), is honoured to host the NSW Local Roads Congress 2024. The congress provides a forum for NSW council executive staff and elected officials to discuss policy issues with NSW State Ministers in order to optimise road and transport outcomes across the state.

This event is scheduled for **Monday, 3 June 2024**, at the distinguished NSW Parliament House, Sydney. The Congress will commence at 9:00 am and conclude at 5:00 pm.

The Congress primarily targets Mayors, Councillors, General Managers and Directors of Engineering within local governments with a focus on policy-oriented discussions under the theme 'Planning for the Future'. This theme underscores our commitment to addressing the evolving challenges and opportunities in local road and transport infrastructure, and to ensure the local road network is prepared for the challenges ahead.

An outcome of the congress discussion is to produce a Communiqué outlining key actions for change, as well as helping shape the advocacy framework of the Roads and Transport Directorate. The 2023 Congress Communiqué is provided for your reference.

Some of the topics this year are:

- Future Freight
- Streets as Shared Spaces
- Disaster Recovery Funding
- Electric Vehicles
- Integrated Network Planning
- AI and Asset Management

By attending the congress, you can engage directly with NSW State Ministers, who will provide insights on current issues impacting local roads. Additionally, you will benefit from presentations by a range of technical experts, each offering specialised knowledge and perspectives on various aspects of road and infrastructure management. These sessions are designed to give you an understanding of the political and practical dimensions of local road challenges and advancements in New South Wales.

Please save the date Monday, 3 June 2024. Early bird registrations are now open and can be accessed from the following link: <https://www.ipweansw.org/events/2024-local-roads-congress---planning-for-the-future-03-06-2024>. We look forward to seeing you at the Congress.

Yours sincerely,



Joshua Devitt  
Chief Engineer  
IPWEA Roads and Transport Directorate



David Elliott  
Chief Executive Officer  
IPWEA NSW & ACT



## 2023 NSW Local Roads Congress

### Sustainable Investment

The NSW Roads and Transport Directorate, a partnership between Local Government NSW (LGNSW) and the NSW Division of the Institute of Public Works Engineering Australasia (IPWEA NSW and ACT), is proud to present the 2023 Local Roads Congress Communiqué.

Local and regional transport infrastructure is critical to the safety, resilience, prosperity, and social well-being of NSW communities. The Local Roads Congress (Congress) emphasises the pivotal role of Local Government in shaping local and regional transport infrastructure in partnership with State and Federal Governments.

The last four years have seen massive disruption to NSW communities, the local road network and associated services, due to extensive damage from natural disasters. These issues have been exacerbated by the impacts of COVID-19, skills and supply shortages, and cost inflation rates significantly outstripping rate pegging and Government funding support. The Congress celebrates the efforts of NSW councils to recover damaged local road infrastructure in challenging times of unprecedented workloads.

The Australian Government reported that without action, the economic cost of natural disasters will increase from \$38B to \$73B per annum by 2060 (National Climate Resilience and Adaptation Strategy 2021-25). Local Government must play a major role in improving the resilience of the local road network, recognising that this requires immediate action to facilitate network-wide changes over the medium-long term. Improving the resilience of local roads on a network basis will mitigate the traumatic impacts of natural disasters on affected communities and reduce future costs to all levels of Government. The current overall Government funding models are reactive, insufficient for the scale of the task, inherently inefficient, and poorly aligned to the function of Local Government. The base funding levels do not support the development and retention of a sustainable workforce within Local Government due to an over-reliance on competitive grants. These arrangements do not support proactive infrastructure planning or efficient delivery of projects and services due to funding uncertainty.

The Congress unanimously agreed that a new watershed partnership between Local Government and the NSW and Australian Governments is warranted. This will enable the progression of the local road network toward a sustainable future with the specific goals of improving the safety, social equity, prosperity, liveability, and resilience of NSW communities. The Congress acknowledges this is a shared responsibility and that Local Government must act as a proactive partner to deliver positive outcomes.

## 2023 NSW Local Roads Congress

### Sustainable Investment

#### NSW Local Government

The Congress acknowledges the need to develop improved network-wide plans to address road safety, resilience, productivity, freight movement, and liveability inclusive of all modes of road-related transport.

The Congress identifies that the current funding model is insufficient to meet the needs of NSW local communities and places unprecedented pressure on the current resources within NSW Local Government. The current inequitable and uncertain Government funding arrangements also creates significant challenges in infrastructure planning over the medium term.

The Congress supports a commitment from Local Government to:

- i) Continue to partner with the NSW and Australian Governments to address current and future challenges to deliver fit-for-purpose local transport infrastructure.
- ii) Develop and implement road network safety plans based on a safe systems approach with specific actions to lower road-related trauma.
- iii) Develop and implement critical infrastructure and resilience plans, including reducing the adverse impacts of natural disasters on local roads and associated infrastructure.
- iv) Integrate the outcomes of road network safety and critical infrastructure resilience plans into local transport network plans, asset and risk management plans, community strategic plans, delivery programs, and operational plans, by reporting to the community via annual reports.
- v) Develop and implement improved workforce plans to address the current and future skills shortages in the professional engineering and skilled infrastructure worker disciplines.
- vi) Work with IPWEA NSW & ACT, LGNSW, the NSW Roads and Transport Directorate, tertiary education, and other providers to ensure the development of suitable training programs focussed on managing overall local road networks as well as efficient delivery of maintenance, renewal, and construction activities to local communities.
- vii) Local government continue to report annually on the State of their Assets as per the ALGA agreed performance measures and verify the accuracy of the data included in the reporting.
- viii) Collaborate with NSW Government to formulate a program dedicated to the replacement of causeways, with the primary objective of enhancing natural disaster resilience through betterment.

## 2023 NSW Local Roads Congress

### Sustainable Investment

#### NSW Government

The Congress calls on the NSW Government to:

- i) Continue the Fixing Country Bridges Program with a priority on replacing timber bridges. Expand the program to allow for flexibility to improve the resilience of the local road network by including other structures, such as the replacement of major culverts, as well as aging concrete and steel structures.
- ii) Collaborate with Local Government to formulate a program dedicated to the improvement and upgrading of causeways, with the primary objective of enhancing natural disaster resilience through betterment.
- iii) Continue the Fixing Local Roads Program with an annual allocation aligned to the Roads to Recovery distribution formula to provide greater certainty and allow improved short-medium term infrastructure planning by NSW Local Government.
- iv) Continue to provide competitive grants for the improvement of freight outcomes by addressing first and last-mile challenges on the local and regional road network.
- v) Work with LGNSW to negotiate the removal of emergency services levy charges from NSW Councils for the NSW Rural Fire Service, State Emergency Service, and NSW Fire and Rescue to assist councils to maintain and improve the resilience of Councils roads infrastructure.
- vi) As a matter of urgency, finalise the Regional Roads Transfer and Reclassification Review to provide certainty to Local Government.
- vii) Facilitate an audit of the long-term financial plan of each local government to ensure alignment with the asset management plan lifecycle forecasts that communicate the trade-offs on performance, cost, and risk.
- viii) Work with Local Government to develop a program to strengthen the maintenance, safety, and resilience of the State highway network, giving particular attention to sections that are prone to flooding or experience access limitations during fire incidents.
- ix) Commit to ongoing support for Road Safety initiatives across the entire road network. In particular, to support the development and implementation of Road Safety Strategic Plans at all NSW councils.

## 2023 NSW Local Roads Congress

### Sustainable Investment

#### Australian and NSW Government

The Congress calls on the Australian and NSW Governments to work together with NSW Local Governments to address the following:

- i) A more sustainable long-term funding model for Local Government with a higher level of base funding support and reduced reliance on individual competitive grants.
- ii) A proactive strategy to address the skills shortage in skilled professional Engineers and infrastructure workers.
- iii) A more sustainable model for Natural Disaster Funding Arrangements in New South Wales for all NSW councils focusing on equity and building back better.
- iv) Develop new guidelines for the Natural Disaster Funding Arrangements to allow increased flexibility to build back better with fast, efficient approval mechanisms that enable timely recovery work post-disaster.
- v) Work with Local Government to ensure improved arrangements are put in place for the provision and ongoing care of roads servicing large-scale green power projects such as wind and solar farms, as well as forestry and mining projects, to reduce the cost shift to Local Government.
- vi) Reduce red tape and provide additional Government resources to enable faster approvals for road infrastructure construction, maintenance, and management, including during disaster recovery works.
- vii) Continue to collaborate with Local Governments, businesses, and the international community to address longer-term climate change.

#### Australian Government

The Congress calls on the Australian Government to:

- i) Increase the Roads to Recovery Program to \$1B per annum from 2024-25 onwards, as this funding program is regarded by Local Government as the most efficient mechanism and source of funding for local roads.
- ii) Increase the annual Roads to Recovery Program allocations to align with the construction cost index and the growth in the road asset base, ensuring maintenance of funding levels in real terms.
- iii) Revise the Roads to Recovery Statement of Intent to include the development of local road safety and resilience plans, as well as the integration of natural disaster

## 2023 NSW Local Roads Congress

### Sustainable Investment

adaptation strategies into council transport, asset management, long-term financial plans, delivery programs, and annual budgets.

- iv) Allow councils to utilise Roads to Recovery funding to assist in the development of Road Resilience, Road Safety Strategic, and Road Network Management Plans. Funds would be allocated as a one-off 50/50 funding model with a maximum limit of \$50,000 per Council (subject to increasing the overall Roads to Recovery funding).
- v) As a minimum, double the Australian Government's Bridge Renewal Program from \$85m per annum to \$170m per annum to target improving the resilience of local road routes. Prioritise funding for the replacement of timber and hybrid bridges, and other vulnerable structures.
- vi) Provide a financial incentive program to assist Local Government to employ, train and develop new Cadet Engineers.
- vii) Work with professional bodies such as IPWEA Australasia to increase the capacity and skills of public works personnel, with a specific focus on road network planning, road drainage, road pavements, road surfacing, and asset management.
- viii) Work with universities to increase the focus on the whole of road network planning, road drainage, road pavements, road surfacing, and asset management in future Engineering degree course curriculum.
- ix) Continue to support apprenticeship programs to develop new and existing workers in the operational skills required to build and maintain roads.
- x) Support ongoing research into cost-effective, resilient road materials and independent product reviews by specialist organisations such as the National Transport Research Organisation (NTR). Provide appropriate guidelines and training programs to put this research into practice.
- xi) Promote circular economy principles in road infrastructure by incorporating sustainable and innovative technologies that prioritise environmental sustainability. This includes using renewable resources, adopting advanced construction methods, and promoting the use of recycled materials while setting specific targets for reducing carbon emissions and other environmental impacts.
- xii) Provide direct financial assistance to local governments to enable them to adapt their asset management systems to the requirements of HVRR. Specific targets should be established for integrating HVRR into Local Government operations to ensure the efficient use of these resources.

## 2023 NSW Local Roads Congress

### Sustainable Investment

- xiii) Develop robust capacity-building programs and training sessions for Local Government staff engaged in asset management. These programs should focus on improving the understanding of HVRR and its implications for asset management. Measurable outcomes, such as the number of staff trained or improvements in asset management efficiency, can help gauge the success of these programs.
- xiv) Proactively engage with NSW Local Government and the Roads and Transport Directorate in developing the NSLS and HVRR. By setting clear channels for communication and consultation, the needs and experiences of local communities can be better represented in these standards and reforms.

The 2023 NSW Local Roads Congress, under the banner of 'Sustainable Investment', underscores the necessity of strategic investment in local road infrastructure that ensures safety, efficiency, and resilience both now and into the future. We call on all levels of government to take decisive action towards these goals for the ultimate benefit of all NSW residents.

In addition to the key strategies and objectives outlined in this communiqué, the 2023 NSW Local Roads Congress emphasises the importance of continued dialogue and consistent follow-up actions. Sustainable investment is not a one-time decision but a continuous commitment, and the successful implementation of these proposals relies on consistent collaboration and evaluation.

The NSW Local Roads Congress concludes with a strong call to action, urging all stakeholders to unite in their efforts to enhance the local road network, improve safety, foster economic prosperity, and ensure the resilience and well-being of NSW communities. Through this collective commitment and shared responsibility, we can create lasting positive change for the benefit of all.



# COBAR SHIRE COUNCIL

## DRAFT STOCK CONTROL DEVICE POLICY

## PURPOSE

The purpose of this policy is primarily to safely manage stock control devices on public roads.

## POLICY SCOPE

This policy applies to the management of stock control devices on public roads (Council and Regional roads).

This policy does not apply to stock control devices on private property, where the stock control device is not on a road under the control of Council.

## DEFINITIONS

**Council:** means Cobar Shire Council.

**Councillor:** means a person elected to the governing body of Cobar Shire Council as per section 222 of the Local Government Act 1993.

**Council Officer:** means staff of Cobar Shire Council or contractor or consultant engaged by Council officers to aid in the development of this policy.

**The Landowner:** means any person in lawful possession of land, including occupants.

**Stock grid:** means a steel grid and associated support structures, barriers, warning signs and fencing that are installed at strategic locations to restrict the movement of stock. Stock grates and bypasses have the same meaning as a stock grid. An existing stock grid is a stock grid that is in place as of the date of the adoption of this policy.

**Boundary stock grid:** a grid that is located on a Council managed road at the property boundary between two adjacent properties.

## BACKGROUND

Stock grids are structures constructed on a road for the primary purposes of controlling livestock movements and to manage the safe passage for all road users along Council and regional roads. Stock grids primarily benefit adjoining landowners as they enable their livestock to travel across and along the road reserve unrestricted within the bounds of the stock grids.

A stock grid is a structure across a road and therefore are under the regulatory control of the Council. All stock grids are required to be constructed and maintained to a standard acceptable to Council and the relevant standards.

Ownership and maintenance responsibility of these structures and all associated items, including signs, fencing, audible warning devices etc. shall be vested in the landowner or their successor in title, as per the Roads Act 1993 Part 9 Division 3. Should no owner for a structure be identified, Council may remove the structure.

This policy aims to promote a positive working partnership with local landowners for the repair, and/or removal of existing stock grids and their replacement with more sustainable alternatives.



Applications for the installation of new stock control devices at new locations on Council managed road reserves require Council approval and are considered by Council each on its own merit.

The installation of new stock grids will not be considered unless all other approved options are not considered appropriate for the specific stock, location and conditions.

## **MAINTENANCE, REPAIRS AND REPLACEMENT**

In accordance with the requirements of the Roads Act 1993 Part 9 Division 3, the owner of a stock grid or their successor in title is responsible for the satisfactory condition of the stock grid structure. This includes the associated fencing, signage and the gates located within the road reserve.

However, due to the risk and legislative requirements associated with working on public roads, Council will assist with the maintenance of the stock grid and associated infrastructure in partnership with the landowner to which the assets serve.

Where an existing stock grid is, in the opinion of Council's engineer, in such a state of disrepair as to constitute a danger to road users, Council will consult with landholder to arrange for the repair, removal or replacement of the grid. This includes assisting landowners with the removal of existing stock grids and replacement with property boundary fencing or fencing, stock race and dingo siren combinations, to control the movement of livestock within the road reserves without causing adverse effects on road access and safety. Consultation with the relevant landowner(s) will determine which option will be implemented in accordance with this policy.

The installation of new stock grids will not be considered unless all other approved options are not considered appropriate for the specific location.

The maintenance responsibilities for new and replaced grids, will be detailed in a Memorandum of Understanding (MOU) to which both Council and landowner will agree. The landowner or their successor will be liable for the costs of the maintenance conducted by Council on their behalf.

Council shall be responsible for:

- Maintaining the approaches to the grid. .
- Maintaining stock grids, stock races and associated infrastructure on behalf of the landowner to which it serves and recover costs from the landowner for such work performed.
- Specifying the safe standard of stock control devices and their associated infrastructure, carrying out routine inspections of the stock control devices and their associated infrastructure, keeping a register of stock control devices (including a defect register) and undertaking repairs or replacement in consultation with the landowner.
- If requested by a landholder to remove a stock grid, or as determined by Council that the grid should be removed due to their unsafe condition, Council shall confirm whether the landowner wishes to:
  - Install a new stock race and their associated infrastructure; or
  - Install new property boundary fencing, or
  - Not replace with any stock control device.

Once written confirmation has been received from the landowner, Council may assist with:

- the purchase and installation of the new stock race and associated infrastructure
- the purchase and installation of boundary fencing

- removal of the existing stock grid
- If Council deems that the only appropriate option is to install a new stock grid, Council will arrange for the purchase and installation of the new stock grid and associated infrastructure, with the cost to be recovered from the landholder.
- Develop, manage, and retain all MOUs.

Landowner shall be responsible for:

- The costs associated with the maintenance of stock control devices and associated infrastructure located within the road reserve, for work performed by Council on these structures.
- Entering into a MOU with Council regarding maintenance responsibilities and liability of cost obligations of these assets.
- Immediately notifying Council of any defects associated with stock control devices on public roads.

## **RECONSTRUCTION OF ROADS**

If reconstruction of a road is required in the vicinity of a stock grid, Council will consider whether the existing grid meets the design standards of the new road formation. If the existing stock grid does not meet the new road design standard, Council will confirm whether a stock control device is still required by confirming this with the relevant landowner. If it is still required, Council will arrange for the adjustment or replacement of either a stock grid or stock race, with costs being borne by Council.

If the stock grid is considered in a safe and serviceable condition and, will meet the new road design standard, the stock grid may remain in place. If the grid is not required, Council will arrange for its removal at its cost.

## **REPLACEMENT OPTIONS**

### ***Stock Race and Associated Infrastructure***

Where the landowner opts to remove an existing stock grid from a road and replace it with a new stock race and associated infrastructure, Council may assist with the purchase and installation. Council will determine the standard of stock race to be installed in consultation with the landowner.

Council will remove the existing stock grid free of charge and undertake all works to repair the road pavement.

### ***Fencing out Roads***

Where the landowner opts to fence out the road reserve and remove an existing stock grid on a road, Council may assist with the purchase and installation of the fencing. Council will determine the standard of fencing to be installed in consultation with the landowner.

In this instance Council will remove the existing stock grid free of charge and undertake all works to repair the road pavement.

## **STANDARDS**

All works to construct and maintain a stock control devices must comply with the requirements of the Cobar Shire Council Specification for construction of stock grids across public roads under Council control. The type of stock control device or property boundary fencing to be installed will be determined by Council in consultation with the landowner.

## **INSPECTIONS**

All stock control devices will be recorded in Council's system, Council shall inspect all stock control devices (excluding boundary fencing) as part of routine road inspections. Routine inspections will cover the structural integrity, fencing, cleanliness of the grid (how full of dirt and debris it is), audible devices and signage.

Requests for inspections that are not part of routine inspections shall be at the discretion of the Director of Engineering Services.

## **FINANCIAL ASSISTANCE**

Council may allocate funding each year specifically for stock grids under this policy, the allocation of funding will be considered as part of Councils annual budget process..

## **NON-PAYMENT OF FEES AND CHARGES**

Should the landholder not pay costs associated with repairs or installation within the payment terms stipulated by Council, Council may remove the stock control device.

## **RELEVANT LEGISLATION**

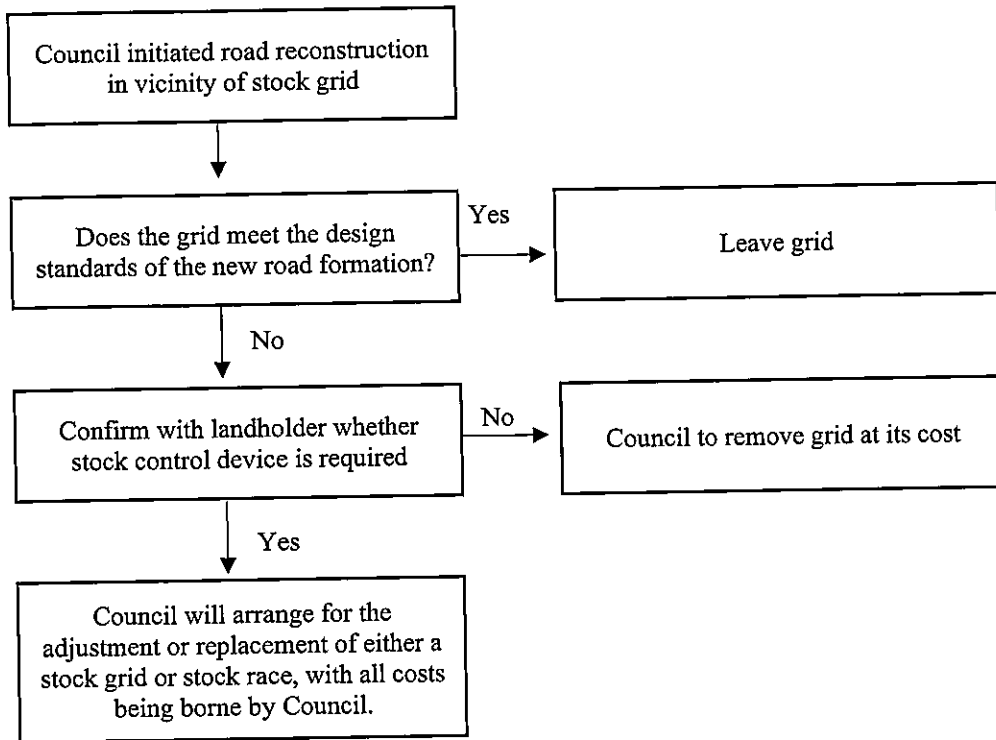
- Local Government Act 1993
- Roads Act 1993
- Relevant Australian Standards (e.g., AS1742.2 for road signage)

## **RELATED DOCUMENTATION**

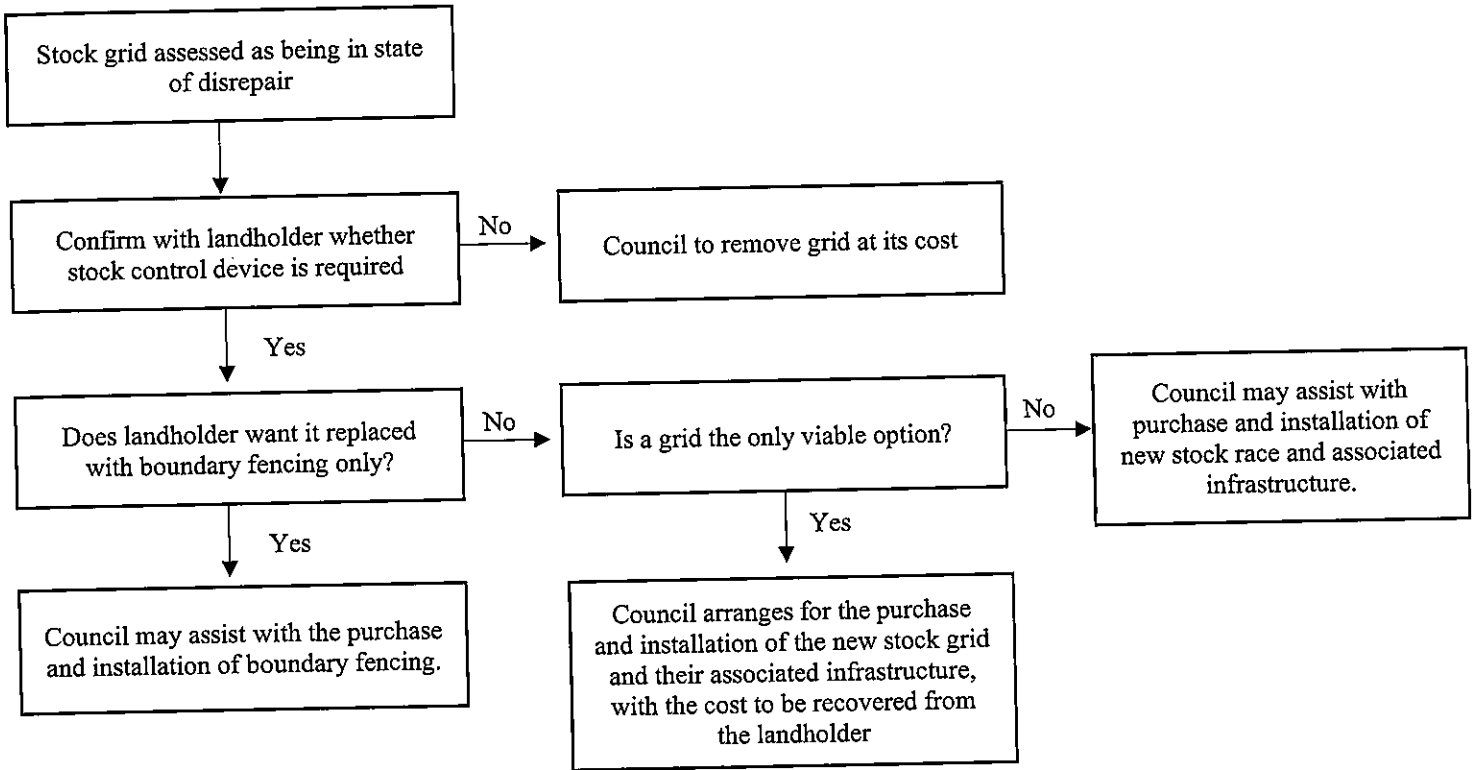
- Cobar Shire Council Specification for Construction of Stock Grids Across Public Roads
- Cobar Shire Council Stock Control Device Register
- Memorandum of Understanding (MOU) detailing the agreement between the landowner and Council for the management of stock control devices

## APPENDIX 1: APPLICATION OF POLICY FLOWCHARTS

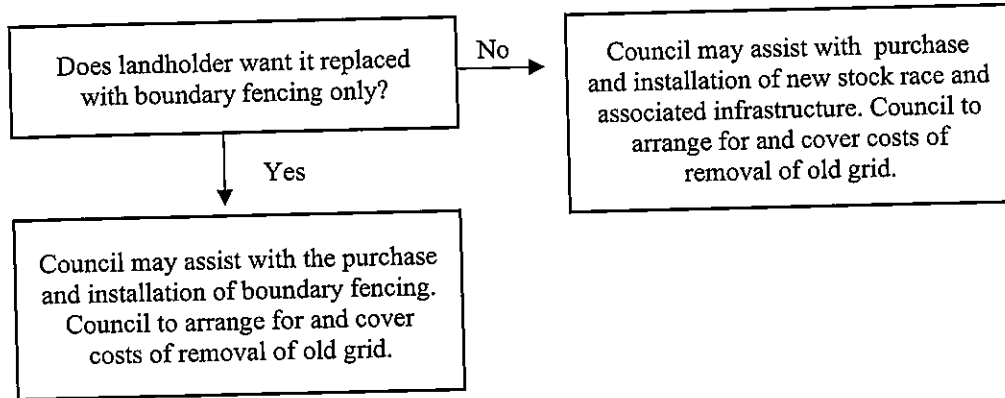
### *Council Initiated Road Reconstruction*



*Stock Grid in State of Disrepair*



*Landholder Requests Removal of Stock Grid*



**AMENDMENT LIST**

<b>No.</b>	<b>Date Adopted</b>	<b>Responsible</b>	<b>Date Commenced</b>

---

**MINUTES OF THE LOCAL TRAFFIC COMMITTEE MEETING  
HELD IN COUNCIL CHAMBERS, 36 LINSLEY STREET ON  
WEDNESDAY 21 FEBRUARY 2024 COMMENCING AT 4:00PM**

---

**PRESENT**

Cr Julie Payne (Chairperson, Cobar Shire Council), Lisa Kennedy, (TfNSW), Cat Fuller (TfNSW), Sgt Chris Russell (Cobar Police), Maurice Bell (Cobar Shire Council) and Kelly Buerckner (Cobar Shire Council).

**VOTING MEMBERS**

Lisa Kennedy (TfNSW), Cr Julie Payne (Cobar Shire Council), Miranda Fry (Barwon Electorate) and Sgt Chris Russell (Cobar Police).

---

**APOLOGIES**

David Vant (TfNSW), Miranda Fry (Barwon Electorate), Heinz Kausche (Cobar Shire Council).

---

**REPORT 1 - CONFIRMATION OF MINUTES**

**01TC.02.2024**     **RECOMMENDATION:** That the minutes of the Local Traffic Committee meeting held on Tuesday 21<sup>st</sup> November 2023 be confirmed as a true and correct record of the proceedings of that meeting.  
*David Vant/Julie Payne* **CARRIED**

---

**MATTERS ARISING FROM THE MINUTES**

Nil

---

**REPORT 2 – STATUS REPORT**

From the meeting, the Status Report be updated to include the following:

**Item 66** – Ongoing, Incorporated with main street upgrade/ autoclave transit along Marshall St.

**Item 67** – Ongoing, discussed autoclave movements. Heavy vehicle route down Marshall St. Removal of centre refuge islands and replacement after autoclave, safety concerns raised over removal of refuges. Can't detour oversize loads from Marshall St permanently due to using Green and Murray St. Source data on number of OSOM vehicles using Marshall St between Linsley and Barton St's.

**Item 79** – Sound Chapel signage installed. Sealing will be

---



---

completed when heavy patching resumes along HW8 West.

**Item 80** – Police enforcement occurring. Review latest data at next meeting.

**Item 82** – Waiting for line marker to be available.

**Item 83** – Lisa and Cat to conduct site inspection tomorrow. Chris suggestion to move 50km signs closer to Nymagee on Priory Tank Rd.

**Item 84** – Discussed potentially accessing an Active transport grant for bike lane to block trucks being able to double park outside Ampol, concerns about trucks crossing a bike lane to park. Chris advised trucks can't park for longer than 1hr within town limits. Signage for trucks considered, Police have been conducting enforcement of double parking. Paint for parking, potential to cross hatch to narrow the space and prevent double parking.

02TC.02.2024

**RECOMMENDATION:** That the information contained in the Status Report be received and noted.

*Voting Unanimous*

**CARRIED**

---

**GENERAL BUSINESS**

**PEAK GOLDEN WALK:** Old mining equipment is being removed, offered to museum but they don't have space to display. Enquiry if it could be placed on a section of the rest area coming into town. Lisa to investigate guidelines on placing items adjacent to road.

**RECOMMENDATION:** Lisa to investigate guidelines.

*Voting Unanimous*

**CARRIED**

**CORNISH REST AREA:** Item raised around enforcing Cornish rest area as truck only parking. Cornish Rest Area is zoned as shared rest area.

**RECOMMENDATION:** Follow up on signage for carpark across the road, encourage caravans to utilise the area instead of Cornish.

*Voting Unanimous*

**CARRIED**

**NEXT MEETING**

3:30pm Wednesday 22<sup>nd</sup> May 2024.

**THERE BEING NO FURTHER BUSINESS THE MEETING CLOSED AT 5:00 PM**



# **Rural Roads Advisory Committee Meeting Minutes**

**Wednesday 20 March 2024**

---

**MINUTES OF THE RURAL ROADS ADVISORY COMMITTEE  
MEETING HELD AT NYMAGEE ON 20 MARCH 2024 COMMENCING AT 11.05am**

---

**PRESENT**

Cr Bob Sinclair, Bryce Moore, Heinz Kausche, Emma Barton, Jenny Nicholson, Mal Harris, Cr Julie Payne, Peter Maxwell, Cr Lillian Simpson, Cr Kate Winders, Matt Nicholson, Stephen Nicholson, Tony De Ruyter, Des Hill, Margot Dunn, Karen Maxwell, Warren Oates, Neil Sampson, Phil Harley

**APOLOGIES**

Willem De Meyer, Greg Hill, Reece Wilson, Carolyn Martin, Barry Heinz, Marc Coulter, Kane Kreek, George Milliar

**CARRIED**

---

**ITEM 1 – CONFIRMATION OF MINUTES**

**FILE: R5-36**

**Author: *Director of Engineering, Heinz Kausche***

**Business Arising from Previous Minutes**

Jenny noted that Item 4 from previous minutes (repairs to Box Creek after flood damage) hadn't been carried out. It has been bought up by the bus driver and needs attention. *Council explained it is on the work schedule for an upgrade and acknowledged that it has been promised before, however Council have been dealing with large amounts of flood damage and repairing impassable roads. The current proposed fix is for stabilisation and a reseal.*

It was noted that there will be high truck traffic from the mine so needs to be done properly. *Cr Julie Payne queried if this could/should be included in the mine VPA agreement? Heinz will follow up and see if we can do a little more with the crossing.*

Jenny enquired about Item 4 from previous minutes - Grass spraying on the "Ring Road" *Council explained the grass isn't an issue as it is a low traffic road and the seal is holding up. Council are working with Transport for NSW for approval to install speed limit signs*

**RESOLVED:** That the Minutes of the Rural Roads Advisory Committee Meeting held on 9 November 2023 be confirmed as a true and correct record of the proceedings of that meeting.

**Moved – Bob Sinclair**

**Second – Lillian Simpson**

**CARRIED**

---

## **ITEM 2 – RURAL ROADS ADVISORY COMMITTEE – STATUS REPORT**

**FILE: R5-36**

**AUTHOR: Director of Engineering, Heinz Kausche**

### **Item 75 of Status Report**

Council raised that the upgrade to the Tilpa Weir campsite had been on the agenda for a while.

*Council explained we are looking for grants however there isn't currently funding available for this type of project.*

*Grants and Tourism Officers are going for a drive to assess the site in the coming months.*

### **Item 78 – Status Report**

Query - Should this item be removed after Grids Policy is released and funded?

*Council updated the group that the Draft Grid Policy has been workshopped with Councillors and will go for public exhibition. Council is keen to get comment back, particularly from affected farmers*

Concern raised that heading for item 78 isn't accurate?

*Council is not aware of funding for grids and are not chasing any. Council will assess grids for suitability while carrying routine maintenance*

**Motion – Cr Julie Payne – to remove Item 78 from Status Report and Council to approach State Government for grids funding**

**CARRIED**

*Council discussed siren stock barriers being used where grids have been removed. General feedback is landholders are happy with these*

### **Item 91 of Status Report**

Cr Julie Payne asked where are we up to with culvert inspections program?

*Council discussed the Program is not finished and the 52 Mile has been prioritised as works on the upgrade of the road are required to be completed by the end of June. Culvert replacement program is currently about halfway through.*

**RESOLVED:** That the Committee receive and note the information contained in the Status Report.

**CARRIED**

---

### **ITEM 3 – EXPENDITURE REPORT**

**FILE: R5-36**

**AUTHOR: Director of Engineering, Heinz Kausche**

Query from Peter – That \$100k out of the Shire Roads maintenance budget was being reallocated to the airport reseal  
*Council confirmed and that further funds are to be reallocated.*

Query from Peter - approximately \$5,600 in expenditure being allocated to Shire Road 36 for signs for railway crossing. Noted there is no railway crossing on this road.  
*Council to investigate and reallocate funds as required.*

**RESOLVED:** That the Committee receive and note the information contained in the Expenditure Report.

**CARRIED**

---

### **ITEM 4 – GENERAL BUSINESS**

Jenny raised on behalf of The Nymagee Progress Association that Fisher Street maintenance/works are required  
*Council will assess and arrange for maintenance as needed.*

Council bought up on behalf of George that Nelyambo Bridge has dropped/cracked  
*Council will inspect the bridge to check for displacement.*

Karen and Peter raised concerns with live traffic system not being user friendly and road re-openings are not timely. Paper based is easier for the end user.  
Question raised on whether the roads can be closed to heavy vehicles only and whether a time limit can be placed on closures.  
*Council advised that customer service is receiving training to assist with road condition reporting.*  
*Council took the feedback on board and will review the process*

Des suggested that the Cobar portion of the VPA agreement be allocated to Nymagee town maintenance

**Motion — Discuss allocation of VPA money and proportions between Cobar and Nymagee**  
**Moved – Cr Julie Payne – Seconded – Cr Lillian Simpson**

**CARRIED**

Warren raised that the road to Canbelego has been regavelled but needs a culvert to stop erosion  
*Council will investigate.*

Large gravel in front of post office needs a clean up  
*Council to investigate*

Des raised that King Street (at rear of post office) needs to be maintained.. Council discussed that that this is not a council maintained road.  
*Council will provide a list of roads that are council maintained to the Nymagee Progress Association and this committee*

**Motion - That Cobar Shire Council definitively outlines the roads and its responsibilities in the village and return to this committee**  
**Moved Peter Maxwell                  Second Cr Julie Payne**

**CARRIED**

Matt enquired on the potential for upgrade to Balowra Road (MR461)  
*Council recognises that Balowra would benefit from an upgrade but not funded at this stage. Council continues to seek funding to upgrade the regional road network including Balowra Road.*

Query - Is this a candidate for Otta Seal?  
*Council will investigate further.*

**RESOLVED:** That the Committee receive and note the information contained in the General Business.

**CARRIED**

**THERE BEING NO FURTHER BUSINESS, THE MEETING CLOSED AT 12.15pm. THE NEXT MEETING TO BE CONDUCTED ON WEDNESDAY 15 MAY 2024 AT BERANGABAH STATION.**

Shire Roads Maintenance  
For Period 2023/24 - June

Job Number	Description	February MTD	Actual YTD	Comments
192166001	Road Inspections Shire Roads - Rural Roads (Shire) Rural Roads (Shire)	\$ 23,322.17	\$ 228,904.58	Shire road inspections.
192166002	All Shire Roads Expenditure - Rural Roads (Shire) Rural Roads (Shire)	\$ -	\$ 915.93	
192166004	Gravel Pit Licencing - Rural Roads (Shire) Rural Roads (Shire)	\$ -	\$ 43,072.92	
192166005	Bore Expenditure - Rural Roads (Shire) Rural Roads (Shire)	\$ -	\$ 38.21	
192166010	SR1 Buckambe Road/Budda Road - Graveling - Rural Roads (Shi Rural Roads (Shire)	\$ -	\$ 1,781.09	
192166011	SR1 Buckambe Road/Budda Road - Maintenance Grading - Rural R Rural Roads (Shire)	\$ -	\$ 150,597.88	
192166012	SR1 - Vegetation Maintenance - Rural Roads (Shire) Rural Roads (Shire)	\$ -	\$ -	
192166020	SR2 Seventy Eight Mile Road - Graveling - Rural Roads (Shir Rural Roads (Shire)	\$ -	\$ 79,249.92	
192166021	SR2 Seventy Eight Mile Road - Maintenance Grading - Rural Ro Rural Roads (Shire)	\$ 8,015.00	\$ 178,874.47	Labour hire for roller driver.
192166022	SR2 - Vegetation Maintenance - Rural Roads (Shire) Rural Roads (Shire)	\$ 464.00	\$ 464.00	
192166030	SR3 Nelyambo Bridge Road - General Maintenance - Rural Roads Rural Roads (Shire)	\$ -	\$ 16,124.84	
192166031	SR3 Nelyambo Bridge Road - Maintenance Grading - Rural Roads Rural Roads (Shire)	\$ -	\$ -	
192166032	SR3 - Vegetation Maintenance - Rural Roads (Shire) Rural Roads (Shire)	\$ -	\$ 56,520.34	
192166041	SR4 Gidgee Road - Maintenance Grading - Rural Roads (Shire) Rural Roads (Shire)	\$ -	\$ -	
192166042	SR4 - Vegetation Maintenance - Rural Roads (Shire) Rural Roads (Shire)	\$ -	\$ -	
192166050	SR5 - General Maintenance - Rural Roads (Shire) Rural Roads (Shire)	\$ -	\$ -	
192166051	SR5 - Maintenance Grading - Rural Roads (Shire) Rural Roads (Shire)	\$ -	\$ -	
192166052	SR5 - Vegetation Maintenance - Rural Roads (Shire) Rural Roads (Shire)	\$ 1,376.37	\$ 1,376.37	
192166060	SR6 - Graveling - Rural Roads (Shire) Rural Roads (Shire)	\$ 2,214.23	\$ 3,997.63	Drainage Work
192166061	SR6 Pulpulla Road - Maintenance Grading - Rural Roads (Shire Rural Roads (Shire)	\$ 5,800.00	\$ 9,280.00	Road side slashing.
192166062	SR6 - Vegetation Maintenance - Rural Roads (Shire) Rural Roads (Shire)	\$ -	\$ -	
192166070	SR7 Mount Gap Road - Graveling - Rural Roads (Shire) Rural Roads (Shire)	\$ 297.08	\$ 4,567.44	
192166071	SR7 Mount Gap Road - Maintenance Grading - Rural Roads (Shir Rural Roads (Shire)	\$ 425.71	\$ 425.71	
192166072	SR7 - Vegetation Maintenance - Rural Roads (Shire) Rural Roads (Shire)	\$ -	\$ 2,518.76	
192166080	SR8 - General Maintenance - Rural Roads (Shire) Rural Roads (Shire)	\$ 8,400.00	\$ 54,995.13	Labour hire for roller driver.
192166081	SR8 Coomeratta Road - Maintenance Grading - Rural Roads (Shi Rural Roads (Shire)	\$ -	\$ -	
192166082	SR8 - Vegetation Maintenance - Rural Roads (Shire) Rural Roads (Shire)	\$ -	\$ -	
192166090	SR9 - Graveling - Rural Roads (Shire) Rural Roads (Shire)	\$ -	\$ -	
192166091	SR9 Neckarbo Road - Maintenance Grading - Rural Roads (Shire Rural Roads (Shire)	\$ -	\$ 2,470.89	
192166092	SR9 - Vegetation Maintenance - Rural Roads (Shire) Rural Roads (Shire)	\$ -	\$ 242.86	
192166100	SR10 - Graveling - Rural Roads (Shire) Rural Roads (Shire)	\$ -	\$ 89.63	
192166101	SR10 Belarabon Road - Maintenance Grading - Rural Roads (Shi Rural Roads (Shire)	\$ 1,740.00	\$ 4,208.67	
192166102	SR10 - Vegetation Maintenance - Rural Roads (Shire) Rural Roads (Shire)	\$ -	\$ 1,490.49	
192166110	SR11 - General Maintenance - Rural Roads (Shire) Rural Roads (Shire)	\$ -	\$ 180.24	
192166111	SR11 Bloomfield Road - Maintenance Grading - Rural Roads (Sh Rural Roads (Shire)	\$ -	\$ 2,398.61	
192166112	SR11 - Vegetation Maintenance - Rural Roads (Shire) Rural Roads (Shire)	\$ 3,481.41	\$ 4,200.77	Cleaning Culverts
192166120	SR12 Yathong Road - Graveling - Rural Roads (Shire) Rural Roads (Shire)	\$ 3,559.28	\$ 40,752.59	Signage.
192166121	SR12 Yathong Road - Maintenance Grading - Rural Roads (Shire Rural Roads (Shire)	\$ -	\$ 1,530.52	
192166122	SR12 - Vegetation Maintenance - Rural Roads (Shire) Rural Roads (Shire)	\$ -	\$ 10,314.36	
192166130	SR13 - Graveling - Rural Roads (Shire) Rural Roads (Shire)	\$ -	\$ -	
192166131	SR13 Bedooba Road - Maintenance Grading - Rural Roads (Shire Rural Roads (Shire)	\$ 1,918.77	\$ 108,709.57	

**Shire Roads Maintenance  
For Period 2023/24 - June**

Job Number	Description	February MTD	Actual YTD	Comments
192166132	SR13 Lerida Road - Vegetation Maintenance - Rural Roads (Shi Rural Roads (Shire)	\$ 11,158.85	\$ 23,155.30	Road side slashing.
192166133	SR13 Lerida Road - Maintenance Sealed Length - Rural Roads (Shire)	\$ 5,626.25	\$ 5,904.00	Slashing.
192166140	SR14 Manuka Road - General Maintenance - Rural Roads (Shire) Rural Roads (Shire)	\$ -	\$ -	
192166141	SR14 Manuka Road - Maintenance Grading - Rural Roads (Shire) Rural Roads (Shire)	\$ -	\$ -	
192166142	SR14 Manuka Road - Vegetation Maintenance - Rural Roads (Shi Rural Roads (Shire)	\$ -	\$ -	
192166150	SR15 Shuttleton Road - General Maintenance - Rural Roads (Sh Rural Roads (Shire)	\$ -	\$ 504.00	
192166151	SR15 Shuttleton Road - Maintenance Grading - Rural Roads (Sh Rural Roads (Shire)	\$ -	\$ -	
192166152	SR15 Shuttleton Road - Vegetation Maintenance - Rural Roads Rural Roads (Shire)	\$ -	\$ -	
192166160	SR16 - General Maintenance - Rural Roads (Shire) Rural Roads (Shire)	\$ -	\$ -	
192166161	SR16 Sandy Creek Road - Maintenance Grading - Rural Roads (Shire) Rural Roads (Shire)	\$ -	\$ 6,724.31	
192166162	SR16 - Vegetation Maintenance - Rural Roads (Shire) Rural Roads (Shire)	\$ -	\$ -	
192166170	SR17 - Gravelling - Rural Roads (Shire) Rural Roads (Shire)	\$ -	\$ 423.75	
192166171	SR17 Merri Road - Maintenance Grading - Rural Roads (Shire) Rural Roads (Shire)	\$ -	\$ 4,461.77	
192166172	SR17 - Vegetation Maintenance - Rural Roads (Shire) Rural Roads (Shire)	\$ -	\$ -	
192166180	SR18 - Gravelling - Rural Roads (Shire) Rural Roads (Shire)	\$ -	\$ -	
192166181	SR18 Bruce Cullenward Road - Maintenance Grading - Rural Road Rural Roads (Shire)	\$ 1,160.00	\$ 2,320.00	
192166182	SR18 - Vegetation Maintenance - Rural Roads (Shire) Rural Roads (Shire)	\$ -	\$ 728.67	
192166190	SR19 Burthong Road - Gravelling - Rural Roads (Shire) Rural Roads (Shire)	\$ 1,393.09	\$ 9,070.09	
192166191	SR19 Burthong Road - Maintenance Grading - Rural Roads (Shir Rural Roads (Shire)	\$ -	\$ -	
192166192	SR19 - Vegetation Maintenance - Rural Roads (Shire) Rural Roads (Shire)	\$ -	\$ -	
192166200	SR20 - Gravelling - Rural Roads (Shire) Rural Roads (Shire)	\$ 444.81	\$ 444.81	
192166201	SR20 Grain Road - Maintenance Grading - Rural Roads (Shire) Rural Roads (Shire)	\$ 1,080.12	\$ 43,577.50	
192166202	SR20 Grain Road - Vegetation Maintenance - Rural Roads (Shi Rural Roads (Shire)	\$ -	\$ 1,843.19	
192166203	SR20 Grain Road - Maintenance Sealed Length - Rural Roads ( Rural Roads (Shire)	\$ -	\$ 4,136.97	
192166210	SR21 - General Maintenance - Rural Roads (Shire) Rural Roads (Shire)	\$ 222.41	\$ 605.43	
192166211	SR21 Tallebung Road - Maintenance Grading - Rural Roads (Shi Rural Roads (Shire)	\$ -	\$ 180.03	
192166212	SR21 - Vegetation Maintenance - Rural Roads (Shire) Rural Roads (Shire)	\$ -	\$ 399.67	
192166220	SR22 - Gravelling - Rural Roads (Shire) Rural Roads (Shire)	\$ -	\$ 1,361.96	
192166221	SR22 Round Hill Road - Maintenance Grading - Rural Roads (Sh Rural Roads (Shire)	\$ -	\$ 2,821.77	
192166222	SR22 - Vegetation Maintenance - Rural Roads (Shire) Rural Roads (Shire)	\$ -	\$ 201.34	
192166230	SR23 Booberoi Road - General Maintenance - Rural Roads (Shir Rural Roads (Shire)	\$ 141.41	\$ 100,802.39	
192166231	SR23 Booberoi Road - Maintenance Grading - Rural Roads (Shir Rural Roads (Shire)	\$ -	\$ 65,278.64	
192166232	SR23 - Vegetation Maintenance - Rural Roads (Shire) Rural Roads (Shire)	\$ -	\$ 1,325.88	
192166240	SR24 Mount Grace Road - Gravelling - Rural Roads (Shire) Rural Roads (Shire)	\$ -	\$ 809.11	
192166241	SR24 Mount Grace Road - Maintenance Grading - Rural Roads (S Rural Roads (Shire)	\$ -	\$ 20,927.72	
192166242	SR24 - Vegetation Maintenance - Rural Roads (Shire) Rural Roads (Shire)	\$ -	\$ -	
192166250	SR25 Wilgaroon Road - General Maintenance - Rural Roads (Shi Rural Roads (Shire)	\$ -	\$ -	
192166251	SR25 Wilgaroon Road - Maintenance Grading - Rural Roads (Shi Rural Roads (Shire)	\$ -	\$ 64.58	
192166252	SR25 - Vegetation Maintenance - Rural Roads (Shire) Rural Roads (Shire)	\$ -	\$ -	
192166260	SR26 - Gravelling - Rural Roads (Shire) Rural Roads (Shire)	\$ -	\$ 3,606.78	
192166261	SR26 Wilga Downs Road - Maintenance Grading - Rural Roads (S Rural Roads (Shire)	\$ 1,928.11	\$ 4,022.82	



**Shire Roads Maintenance  
For Period 2023/24 - June**

Job Number	Description	February MTD	Actual YTD	Comments
192166262	SR26 - Vegetation Maintenance - Rural Roads (Shire) Rural Roads (Shire)	\$ 7,057.29	\$ 12,857.29	Road side slashing.
192166270	SR27 Cooneybar Road - Graveling - Rural Roads (Shire) Rural Roads (Shire)	\$ -	\$ -	
192166271	SR27 Cooneybar Road - Maintenance Grading - Rural Roads (Shi Rural Roads (Shire)	\$ -	\$ 17,957.16	
192166272	SR27 - Vegetation Maintenance - Rural Roads (Shire) Rural Roads (Shire)	\$ -	\$ -	
192166280	SR28 - General Maintenance - Rural Roads (Shire) Rural Roads (Shire)	\$ -	\$ -	
192166281	SR28 Yimkin Road - Maintenance Grading - Rural Roads (Shire) Rural Roads (Shire)	\$ -	\$ -	
192166282	SR28 - Vegetation Maintenance - Rural Roads (Shire) Rural Roads (Shire)	\$ -	\$ -	
192166290	SR29 - Graveling - Rural Roads (Shire) Rural Roads (Shire)	\$ -	\$ 654.08	
192166291	SR29 Booroomugga Road - Maintenance Grading - Rural Roads (S Rural Roads (Shire)	\$ -	\$ -	
192166292	SR29 Booroomugga Road - Maintenance Grading - Rural Roads Rural Roads (Shire)	\$ -	\$ -	
192166300	SR30 - Graveling - Rural Roads (Shire) Rural Roads (Shire)	\$ -	\$ -	
192166301	SR30 Canbelego Road - Maintenance Grading - Rural Roads (Sh Rural Roads (Shire)	\$ -	\$ -	
192166302	SR30 - Vegetation Maintenance - Rural Roads (Shire) Rural Roads (Shire)	\$ -	\$ -	
192166310	SR31 - Graveling - Rural Roads (Shire) Rural Roads (Shire)	\$ 1,528.66	\$ 3,426.94	
192166311	SR31 Moolah Road - Maintenance Grading - Rural Roads (Shire) Rural Roads (Shire)	\$ -	\$ -	
192166312	SR31 - Vegetation Maintenance - Rural Roads (Shire) Rural Roads (Shire)	\$ -	\$ -	
192166320	SR32 - Graveling - Rural Roads (Shire) Rural Roads (Shire)	\$ -	\$ 31,571.40	
192166321	SR32 Developmental Road - Maintenance Grading - Rural Roads Rural Roads (Shire)	\$ -	\$ -	
192166322	SR32 - Vegetation Maintenance - Rural Roads (Shire) Rural Roads (Shire)	\$ -	\$ -	
192166330	SR33 - General Maintenance - Rural Roads (Shire) Rural Roads (Shire)	\$ -	\$ 840.00	
192166331	SR33 Nymagee Station Road - Maintenance Grading - Rural Road Rural Roads (Shire)	\$ 468.16	\$ 468.16	
192166332	SR33 - Vegetation Maintenance - Rural Roads (Shire) Rural Roads (Shire)	\$ -	\$ -	
192166340	SR34 - General Maintenance - Rural Roads (Shire) Rural Roads (Shire)	\$ -	\$ -	
192166341	SR34 Wallacevale Road - Maintenance Grading - Rural Roads (S Rural Roads (Shire)	\$ -	\$ -	
192166342	SR34 - Vegetation Maintenance - Rural Roads (Shire) Rural Roads (Shire)	\$ -	\$ -	
192166350	SR35 - General Maintenance - Rural Roads (Shire) Rural Roads (Shire)	\$ -	\$ -	
192166351	SR35 Osterly Downs Road - Maintenance Grading - Rural Roads Rural Roads (Shire)	\$ -	\$ -	
192166352	SR35 - Vegetation Maintenance - Rural Roads (Shire) Rural Roads (Shire)	\$ 222.41	\$ 222.41	
192166360	SR36 - General Maintenance - Rural Roads (Shire) Rural Roads (Shire)	\$ -	\$ 5,698.74	
192166361	SR36 Palesthan Road - Maintenance Grading - Rural Roads (Shi Rural Roads (Shire)	\$ -	\$ -	
192166362	SR36 - Vegetation Maintenance - Rural Roads (Shire) Rural Roads (Shire)	\$ -	\$ -	
192166370	SR37 - General Maintenance - Rural Roads (Shire) Rural Roads (Shire)	\$ -	\$ -	
192166371	SR37 Bimbella Road - Maintenance Grading - Rural Roads (Shir Rural Roads (Shire)	\$ -	\$ -	
192166372	SR37 - Vegetation Maintenance - Rural Roads (Shire) Rural Roads (Shire)	\$ -	\$ -	
192166380	SR38 - General Maintenance - Rural Roads (Shire) Rural Roads (Shire)	\$ 522.00	\$ 522.00	
192166381	SR38 CSA Access Road - Grader Maintenance - Rural Roads (Shi Rural Roads (Shire)	\$ -	\$ 522.00	
192166382	SR38 - Vegetation Maintenance - Rural Roads (Shire) Rural Roads (Shire)	\$ -	\$ -	
192166383	SR38 - Sealed Maintenance - Rural Roads (Shire) Rural Roads (Shire)	\$ -	\$ -	
192166390	SR39 - General Maintenance - Rural Roads (Shire) Rural Roads (Shire)	\$ -	\$ -	
192166391	SR39 Coombie Road - Maintenance Grading - Rural Roads (Shire Rural Roads (Shire)	\$ -	\$ -	
192166392	SR39 - Vegetation Maintenance - Rural Roads (Shire) Rural Roads (Shire)	\$ -	\$ -	

**Shire Roads Maintenance  
For Period 2023/24 - June**

Job Number	Description	February MTD	Actual YTD	Comments
192166400	SR40 Filtration Plant Road - General Maintenance - Rural Ro Rural Roads (Shire)	\$ -	\$ -	
192166401	SR40 Filtration Plant Road - Grader Maintenance - Rural Road Rural Roads (Shire)	\$ -	\$ -	
192166402	SR40 - Vegetation Maintenance - Rural Roads (Shire) Rural Roads (Shire)	\$ -	\$ -	
192166403	SR40 - Sealed Maintenance - Rural Roads (Shire) Rural Roads (Shire)	\$ -	\$ -	
192166410	SR41 - General Maintenance - Rural Roads (Shire) Rural Roads (Shire)	\$ -	\$ 547.70	
192166411	SR41 Tilpa Weir Road - Maintenance Grading - Rural Roads (Sh) Rural Roads (Shire)	\$ -	\$ -	
192166412	SR41 - Vegetation Maintenance - Rural Roads (Shire) Rural Roads (Shire)	\$ -	\$ -	
192166420	SR42 Endeavor Mine Road - General Maintenance - Rural Roads (Shire) Rural Roads (Shire)	\$ -	\$ -	
192166421	SR42 Endeavor Mine Road - Grader Maintenance - Rural Roads (Rural Roads (Shire)	\$ 1,740.00	\$ 1,740.00	
192166422	SR42 Endeavor Mine Road - Vegetation Maintenance - Rural Roa Rural Roads (Shire)	\$ -	\$ 192.77	
192166423	SR42 Endeavor Mine Road - Sealed Maintenance - Rural Roads (Shire)	\$ -	\$ -	
192166430	SR43 - General Maintenance - Rural Roads (Shire) Rural Roads (Shire)	\$ -	\$ -	
192166431	SR43 Sewerage Works Road - Maintenance Grading - Rural Roads Rural Roads (Shire)	\$ -	\$ -	
192166432	SR43 - Vegetation Maintenance - Rural Roads (Shire) Rural Roads (Shire)	\$ -	\$ -	
192166440	SR44 - General Maintenance - Rural Roads (Shire) Rural Roads (Shire)	\$ -	\$ -	
192166441	SR44 Old Reservoir Road - Maintenance Grading - Rural Roads Rural Roads (Shire)	\$ -	\$ -	
192166442	SR44 - Vegetation Maintenance - Rural Roads (Shire) Rural Roads (Shire)	\$ -	\$ -	
192166450	SR45 - General Maintenance - Rural Roads (Shire) Rural Roads (Shire)	\$ -	\$ -	
192166451	SR45 - Grader Maintenance - Rural Roads (Shire) Rural Roads (Shire)	\$ -	\$ -	
192166452	SR45 - Vegetation Maintenance - Rural Roads (Shire) Rural Roads (Shire)	\$ -	\$ -	
192166453	SR45 - Sealed Maintenance - Rural Roads (Shire) Rural Roads (Shire)	\$ -	\$ -	
192166460	SR46 - Gravel & Seal - Rural Roads (Shire) Rural Roads (Shire)	\$ 120,442.33	\$ 134,559.60	Maintenance grading.
192166461	SR46 Rosevale Road - Maintenance Grading - Rural Roads (Shir Rural Roads (Shire)	\$ 580.00	\$ 9,445.00	
192166462	SR46 - Vegetation Maintenance - Rural Roads (Shire) Rural Roads (Shire)	\$ 100.16	\$ 561.69	
192166481	SR48 Euabalong Tip Road - Maintenance Grading - Rural Roads Rural Roads (Shire)	\$ -	\$ 1,153.45	
192168009	SR 9 - Neckarboo - Rural Roads (Shire)	\$ 216,830.08	\$ 1,608,622.80	
	<b>Budget for 2023/2024</b>		<b>\$ 2,105,099.00</b>	
	<b>Total YTD</b>		<b>\$ 1,608,622.80</b>	
	<b>Balance</b>		<b>\$ 496,476.20</b>	

**Regional Roads Maintenance  
For Period 2023/24 - June**

Job Number	Description	February MTD	Actual YTD	Comments
195170001	Road Inspections Regional Roads - Regional Roads Block Grant Regional Roads Block Grant	\$ 2,147.46	\$ 10,893.79	Regional road inspections
195171001	Traffic Facilities - Regional Roads Block Grant Regional Roads Block Grant	\$ -	\$ -	
195171002	Gravel Pit Licencing - Regional Roads Block Grant Regional Roads Block Grant	\$ -	\$ 7,500.00	
195172282	MR 228 Whitbarrow Way - Pavement M'tnce - Regional Roads Bloc Regional Roads Block Grant	\$ -	\$ 372.69	
195172283	MR 228 Whitbarrow Way - Vegetation M'tnce - Regional Roads B Regional Roads Block Grant	\$ 3,007.09	\$ 5,327.09	Road side slashing
195172284	MR 228 Whitbarrow Way - Maintenance Grading - Regional Roads Regional Roads Block Grant	\$ -	\$ 5,936.68	
195172285	Regional Road Signage - Regional Roads Block Grant Regional Roads Block Grant	\$ -	\$ -	
195174070	MR 407 Mulya Road - General M'tnce - Regional Roads Block Gr Regional Roads Block Grant	\$ -	\$ 16,721.73	
195174071	MR 407 Mulya Road - Pavement M'tnce - Regional Roads Block G Regional Roads Block Grant	\$ -	\$ 688.12	
195174072	MR 407 Mulya Road - Gravel Resheeting - Regional Roads Block Regional Roads Block Grant	\$ 812.00	\$ 6,032.00	
195174073	MR 407 Mulya Road - Vegetation M'tnce - Regional Roads Blo Regional Roads Block Grant	\$ 292.67	\$ 89,337.41	
195174074	MR 407 Mulya Road - Maintenance Grading - Regional Roads Block Grant Regional Roads Block Grant	\$ -	\$ -	
195174075	MR 407 Mulya Road - Sealing - Regional Roads Block Grant Regional Roads Block Grant	\$ 385.85	\$ 3,597.93	
195174110	MR 411 Tipping Way - General M'tnce - Regional Roads Block G Regional Roads Block Grant	\$ -	\$ -	
195174111	MR 411 Tipping Way - Pavement M'tnce - Regional Roads Block Regional Roads Block Grant	\$ -	\$ 33,164.52	
195174112	MR 411 Tipping Way - Gravel Resheeting - Regional Roads Bloc Regional Roads Block Grant	\$ -	\$ -	
195174113	MR 411 Tipping Way - Vegetation M'tnce - Regional Roads Blo Regional Roads Block Grant	\$ 9,048.00	\$ 17,918.70	Road side slashing
195174114	MR 411 Tipping Way - Maintenance Grading - Regional Roads Bi Regional Roads Block Grant	\$ -	\$ -	
195174115	MR 411 Tipping Way - Sealing - Regional Roads Block Grant Regional Roads Block Grant	\$ -	\$ 47,628.56	
195174160	MR 416 The Wool Track - General M'tnce - Regional Roads Bloc Regional Roads Block Grant	\$ -	\$ 3,693.37	
195174161	MR 416 The Wool Track - Pavement M'tnce - Regional Roads Blo Regional Roads Block Grant	\$ -	\$ 3,753.19	
195174162	MR 416 The Wool Track - Gravel Resheeting - Regional Roads B Regional Roads Block Grant	\$ -	\$ -	
195174163	MR 416 The Wool Track - Vegetation M'tnce - Regional Roads B Regional Roads Block Grant	\$ 6,960.00	\$ 13,920.00	Road side slashing
195174164	MR 416 The Wool Track - Maintenance Grading - Regional Roads Regional Roads Block Grant	\$ -	\$ 44,659.34	
195174165	MR 416 The Wool Track - Sealing - Regional Roads Block Grant Regional Roads Block Grant	\$ -	\$ -	
195174190	MR 419 Glenwood Road - General M'tnce - Regional Roads Block Regional Roads Block Grant	\$ -	\$ 10,789.71	
195174192	MR 419 Glenwood Road - Gravel Resheeting - Regional Roads Bi Regional Roads Block Grant	\$ -	\$ 279.68	
195174193	MR 419 Glenwood Road - Vegetation M'tnce - Regional Roads Bi Regional Roads Block Grant	\$ -	\$ 216.00	
195174194	MR 419 Glenwood Road - Maintenance Grading - Regional R Regional Roads Block Grant	\$ -	\$ 4,960.57	
195174230	MR 423 Lachlan Valley Way - General Maintenance - Regional Regional Roads Block Grant	\$ -	\$ 21,688.45	
195174231	MR 423 Lachlan Valley Way - Pavement Maintenance - Regional Regional Roads Block Grant	\$ 41,386.26	\$ 90,903.46	Maintenance grading.
195174610	MR461 Priory Tank/Balowra Road - General Maintenance - Regiona Regional Roads Block Grant	\$ 548.02	\$ 803.99	
195174611	MR461 Priory Tank/Balowra Road - Pavement Mntnce - Regional Regional Roads Block Grant	\$ -	\$ -	
195174612	MR461 Priory Tank/Balowra Road - Gravel Resheeting - Regiona Regional Roads Block Grant	\$ 4,060.00	\$ 8,120.00	Road side slashing
195174613	MR461 Priory Tank/Balowra Road - Vegetation Mainten - Regiona Regional Roads Block Grant	\$ -	\$ 935.53	
195174614	MR461 Priory Tank/Balowra Road - General Maintenance - Regiona	\$ -	\$ -	
195175180	MR7518 Fifty Two Mile Road - General M'tnce - Regional Roads Regional Roads Block Grant	\$ -	\$ 12,988.65	
195175181	MR7518 Fifty Two Mile Road - Pavement M'tnce - Regional Road Regional Roads Block Grant	\$ -	\$ -	
195175182	MR7518 Fifty Two Mile Road - Gravel Resheeting - Regional Ro Regional Roads Block Grant	\$ -	\$ -	
195175183	MR7518 Fifty Two Mile Road - Vegetation M'tnce - Regional Ro Regional Roads Block Grant	\$ 3,480.00	\$ 6,960.00	Road side slashing



**Capital**

**For Period 2023/24 - June**

Job Number	Description	2023/24 Full Year Budget	February MTD	Actual YTD	Comments
100055650	SR10 Belarabon Rd - Resheet - General Fund - Capital	\$ 200,000.00	\$ -	\$ 176,785.88	
100055082	Roads to Recovery	\$ 1,085,000.00	\$ -	\$ -	
100055109	SR12 -Yathong - Gravel Fixing Local Roads (\$2.9M f - General	\$ 123,741.00	\$ -	\$ 82,355.23	
100055140	Upgrade & Seal Auxiliary Runway 17/35 (LRC1 3) - General Fun	\$ 973,652.00	\$ 1,197,447.15	\$ 1,239,568.07	Preparing stockpile, CSC labour for airport reseal (vegetation removal, supervision and ARO).
100055151	Shire Wide Culverts - General Fund - Capital	\$ 762,958.00	\$ -	\$ 236,638.56	
100055153	Lachlan Valley Way Culverts - General Fund - Capital	\$ 694,815.00	\$ -	\$ 12,525.00	
100055191	RR7518 - Fifty Two Mile Road Seal - RLRRP	\$ 850,000.00	\$ 320,061.20	\$ 1,515,170.70	Gravelling.
100055194	SR1 Buckanbe Rd - General Fund - Capital	\$ 96,053.00	\$ -	\$ 118,151.83	
100055201	R4R9 - 015.5 - Footpath Connector and DDA Project - General	\$ 1,117,824.00	\$ -	\$ 2,283.64	
100055501	R4R-9 015.3 Booberoi Road Bridge Replacement - General Fund	\$ 2,730,327.00	\$ -	\$ 62,005.00	
100055502	R4R-9 015.4 Round Hill Road Bridge Replacement - General Fun	\$ 2,730,327.00	\$ -	\$ 62,495.00	
100055520	MR416 - The Wool Track - Seal Extension RNSW2716	\$ 7,139,004.00	\$ 10,600.00	\$ 10,600.00	Contour and detail survey.
100055706	Grant Funding SR20 Grain Road Seal Extension (FLR - General	\$ 3,533,305.00	\$ 37,850.87	\$ 1,276,712.35	Formation Grading of Gravel.
100055735	SR26 Wilga Downs Rd - Fixing Local Roads (\$250k R2 - General	\$ 287,283.00	\$ -	\$ 33,358.36	
100055860	Cobar Industrial Estate Road and Storm Water Upgra - General	\$ 4,604,076.00	\$ 15,385.00	\$ 703,574.54	Rental for storage of box culverts and project management.
100055885	Shire Roads Resealing - General Fund - Capital (Louth Road)	\$ 160,648.96	\$ -	\$ -	
100055886	Regional and Local Road Repair Program	\$ 8,963,720.00	\$ 460,145.99	\$ 2,811,155.60	Gravelling on 52 Mile, Grading on Rosevale Road, Heavy Patching on Tipping Way and Wool Track and Maintenance on Glenwood Road.
100055133	LRC14 Bore Replacement Program	\$ 275,000.00	\$ 41,947.99	\$ 41,947.99	Purchase of 2 water tanks.
100055039	LRC14 Footpath Reinstatement in Marshall Street	\$ 350,947.00	\$ -	\$ -	
100055058	Caravan Parking Area - adjacent to Heritage Park	\$ 100,000.00	\$ -	\$ 121,718.68	
100055840	Urban Street Reseals - Yathong Culverts	\$ 39,351.04	\$ -	\$ 30,041.04	
	<b>SUBTOTAL</b>	<b>\$ 36,778,680.96</b>	<b>\$ 2,083,438.20</b>	<b>\$ 8,507,046.43</b>	
VPA		\$ -	\$ -	\$ -	
100055202	VPA Burthong Road Maintenance - General Fund - Capital	\$ -	\$ -	\$ -	
100055505	MR 228 Whitbarrow Way Maintenance - VPA	\$ -	\$ -	\$ -	
	<b>SUBTOTAL</b>	<b>\$ 266,790.00</b>	<b>\$ -</b>	<b>\$ -</b>	

**Budget for 2023/2024**  
**Total YTD**  
**Balance**

**\$ 37,045,470.96**  
**\$ 8,507,046.43**  
**\$ 28,538,424.53**

**Flood Damage  
For Period 2023/24 - February**

Job Number	Description	February MTD	Actual YTD	Comments
<b>Shire Roads</b>				
197164101	SR1 - Flood Damage (EPA)	\$ -	\$ -	
197164103	SR3 - Flood Damage (EPA)	\$ -	\$ -	
197164107	SR7 - Flood Damage (EPA) - Flood & Drought Damage - Shire Ro	\$ -	\$ 9,966.22	
197164108	SR8 - Flood Damage (EPA)	\$ -	\$ -	
197164109	SR9 - Flood Damage (EPA)	\$ -	\$ 18,725.00	
197164110	SR10 - Flood Damage (EPA)	\$ -	\$ -	
197164111	SR11 - Flood Damage (EPA) - Flood & Drought Damage - Shire R	\$ -	\$ -	
197164112	SR12 - Flood Damage (EPA) - Flood & Drought Damage - Shire R	\$ -	\$ 16,691.31	
197164113	SR13 - Flood Damage (EPA)	\$ -	\$ 1,845.00	
197164115	SR15 - Flood Damage (EPA)	\$ -	\$ 9,390.69	
197164116	SR16 - Flood Damage (EPA)	\$ -	\$ -	
197164117	SR17 - Flood Damage (EPA)	\$ -	\$ -	
197164118	SR18 - Flood Damage (EPA)	\$ -	\$ 45,227.50	
197164119	SR19 - Flood Damage (EPA)	\$ -	\$ 15,805.17	
197164120	SR20 - Flood Damage (EPA)	\$ -	\$ 51,245.00	
197164123	SR23 - Flood Damage (EPA)	\$ -	\$ -	
197164125	SR25 - Flood Damage (EPA) - Flood & Drought Damage - Shire R	\$ -	\$ -	
197164126	SR26 - Flood Damage (EPA)	\$ 5,635.00	\$ 257,330.00	Repair flood damage.
197164132	SR32 - Flood Damage (EPA)	\$ -	\$ 1,845.00	
197164133	SR33 - Flood Damage (EPA)	\$ 29,612.76	\$ 132,579.71	Flood damage grading.
197164146	SR46 - Flood Damage (EPA)	\$ -	\$ -	
EWSR1A	Buckanbe Road - Emergency Works	\$ -	\$ -	
EWSR1B	Budda Road - Emergency Works	\$ -	\$ -	
EWSR2	Seventy-Eight Mile Road - Emergency Works	\$ -	\$ -	
EWSR3	Nelyambo Bridge Road - Emergency Works	\$ -	\$ -	
EWSR4	Gidgee Road - Emergency Works	\$ -	\$ -	
EWSR6	Pulpulla Road - Emergency Works	\$ -	\$ 75,493.23	
EWSR7	Mount Gap Road - Emergency Works	\$ -	\$ -	
EWSR8	Coomeratta Road - Emergency Works	\$ -	\$ -	
EWSR9	Neckarbo Road - Emergency Works	\$ -	\$ 1,463.88	
EWSR10	Belarabon Road - Emergency Works	\$ -	\$ 3,030.89	
EWSR11	Bloomfield Road - Emergency Works	\$ -	\$ 40,832.82	
EWSR12	Yathong Road - Emergency Works	\$ -	\$ 3,137.86	
EWSR13A	Lerida Road - Emergency Works	\$ -	\$ -	
EWSR13B	Bedooba Road - Emergency Works	\$ -	\$ -	
EWSR14	Manuka Road - Emergency Works	\$ -	\$ -	
EWSR15	Shuttleton Road - Emergency Works	\$ -	\$ -	
EWSR16	Sandy Creek Road - Emergency Works	\$ -	\$ -	
EWSR17	Merri Road - Emergency Works	\$ -	\$ -	
EWSR18	Bruce Cullenward Road - Emergency Works	\$ -	\$ -	

Flood Damage  
For Period 2023/24 - February

Job Number	Description	February MTD	Actual YTD	Comments
EWSR19	Burthong Road - Emergency Works	\$ -	\$ -	
EWSR20	Grain Road - Emergency Works	\$ -	\$ -	
EWSR21	Tallebung Road - Emergency Works	\$ -	\$ -	
EWSR22	Round Hill Road - Emergency Works	\$ -	\$ -	
EWSR23	Booberoi Road - Emergency Works	\$ -	\$ -	
EWSR24	Mount Grace Road - Emergency Works	\$ -	\$ -	
EWSR25	Wilgaroon Road - Emergency Works	\$ -	\$ -	
EWSR26	Wilga Downs Road - Emergency Works	\$ -	\$ -	
EWSR27	Cooneybar Road - Emergency Works	\$ -	\$ -	
EWSR28	Yimkin Road - Emergency Works	\$ -	\$ -	
EWSR29	Booroomugga Road - Emergency Works	\$ -	\$ -	
EWSR30	Canbelego Road - Emergency Works	\$ -	\$ 4,900.00	
EWSR31	Moolah Road - Emergency Works	\$ -	\$ 126,090.00	
EWSR32	Developmental Road - Emergency Works	\$ -	\$ -	
EWSR33	Nymagee Station Road - Emergency Works	\$ -	\$ -	
EWSR34	Wallace Vale Road - Emergency Works	\$ -	\$ -	
EWSR35	Osterley Downs Road - Emergency Works	\$ -	\$ -	
EWSR36	Palesthan Road - Emergency Works	\$ -	\$ -	
EWSR37	Bimbella Road - Emergency Works	\$ -	\$ -	
EWSR39	Combie Road - Emergency Works	\$ -	\$ -	
EWSR41	Tilpa Weir Road - Emergency Works	\$ -	\$ -	
EWSR46	Rosevale Road - Emergency Works	\$ -	\$ -	
192166003	Shire roads Pothole Repair Program	\$ 27,390.43	\$ 568,609.17	Pothole repair.
<b>SUBTOTAL</b>		<b>\$ 27,390.43</b>	<b>\$ 1,322,900.43</b>	
<b>Regional Roads</b>				
197168068	MR68 - Flood Damage (EPA)	\$ -	\$ -	
197168461	MR461 - Flood Damage (EPA)	\$ -	\$ -	
198168416	MR416 - Flood Damage (EPA) - Flood & Drought Damage - Region	\$ -	\$ 8,750.00	
198168518	MR7518 - Flood Damage (EPA) - Flood & Drought Damage - Regio	\$ -	\$ 15,850.00	
197168521	MR7521 - Flood Damage (EPA)	\$ -	\$ 990,525.85	
198168522	MR7522 - Flood Damage (EPA) - Flood & Drought Damage - Regio	\$ -	\$ -	
197168419	MR419 - Flood Damage (EPA)	\$ -	\$ -	
EWMR68	Curranyalpa Road - Emergency Works	\$ -	\$ -	
EWMR228	Whitbarrow Way - Emergency Works	\$ -	\$ -	
EWMR407	Mulya Road - Emergency Works	\$ -	\$ -	
EWMR411	Tipping Way - Emergency Works	\$ -	\$ -	
EWMR416	Wool Track - Emergency Works	\$ -	\$ -	
EWMR419	Glenwood Road - Emergency Works	\$ -	\$ 18,879.54	
EWMR423	Lachlan Valley Way - Emergency Works	\$ -	\$ -	
EWMR461	Priority Tank/Balowra Road - Emergency Works	\$ -	\$ -	
EWMR7518	Fifty-Two Mile - Emergency Works	\$ -	\$ 19,560.00	

**Flood Damage  
For Period 2023/24 - February**

Job Number	Description	February MTD	Actual YTD	Comments
EWMR7521	Kiacatoo Road - Emergency Works	\$ -	\$ -	
EWMR7522	Wool Track - Emergency Works	\$ -	\$ 9,604.01	
198169060	Flood Damage - Consultant - Flood & Drought Damage - Regiona	\$ 61,228.76	\$ 193,762.55	Flood damage consultancy.
195170003	Regional Roads Pothole Repair Program	\$ -	\$ 137,996.34	
<b>SUBTOTAL</b>		<b>\$ 61,228.76</b>	<b>\$ 430,921.23</b>	

Funding Body	Description	Approved	Comments
TfNSW	Essential Public Asset Restoration for Nov 2021 Flood Event and Onwards	\$ 2,985,086.00	
TfNSW	Pothole Repair Program	\$ 769,561.00	
TfNSW	Essential Public Asset Restoration for Sep 2022 Flood Event and Onwards	\$ 1,229,786.34	
TfNSW	Emergency Works for Jan 2024 Rain Event	\$ -	
		<b>\$ 4,984,433.34</b>	